



**NGSER**  
NOUVELLE GÉNÉRATION DE SERVICES

# Our Artificial Intelligence offerings

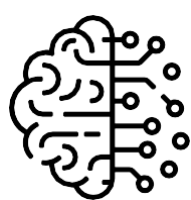
[www.ngser.com](http://www.ngser.com)



---

# CONTEXT

Artificial intelligence (AI) is a broad field that encompasses various technologies and approaches to make machines simulate human intelligence. It is often classified according to its capabilities and applications. NGSER, as a Digital Services Company (ESN), places AI at the heart of our innovation model and at the service of customer experience. AI could increase business profitability by nearly 38%, double annual economic growth rates, and increase labor productivity by up to 40% by 2035.



## **Analytics, AI and automation**

The data economy is profoundly changing most sectors and economic models. - In a co-innovation approach, we support you in exploring new economic models. Mobility and collaborative technologies are completely changing the way we work and consume.



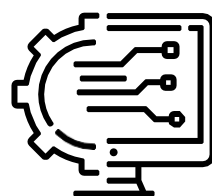
## **Customer Experience Management**

Mobility and collaborative technologies are completely changing the way we work and consume



## **Applications and modern platforms**

At NGSER, we master an end-to-end technology set. We have developed accelerators to enable you to benefit from the business potential of new technologies.



## **Add AI to your business applications**

Through dedicated AI services for voice, image, documents and more

# OUR CHALLENGES



Our AI products are software or hardware solutions that use artificial intelligence (AI) techniques to provide specific functionalities or services. These products use AI algorithms, machine learning models, natural language processing, computer vision or other AI technologies to perform tasks that traditionally require human intelligence.

Our AI products can range from virtual assistants to recommendation systems, facial recognition software or predictive analysis tools. They are designed to simplify processes, automate tasks, improve decision-making and user experience in various industries and applications.

## Implementation of AI tools

Ensure the long-term growth of your business with high-performance solutions/services

## Optimize Digitization

Achieve Your digital transformation With complete confidence, with AI tools compatible with your systems

## Mastery and expertise

In advanced AI methodologies and technologies

## Resilience of your system

Guarantee your ability to transform and reinvent yourself thanks to our AI solutions/services



---

# OUR DIFFERENT AIS: NARROW ARTIFICIAL INTELLIGENCE (ANI)

Narrow AI, also known as weak AI, is the most common and widespread type of AI. It focuses on a specific task or area, such as image recognition, natural language processing or gameplay. Narrow AI systems are generally very effective in their specific area, but they are not able to generalize their skills to other tasks.

Some use cases:



## IDENTIFICATION

Facial recognition in applications



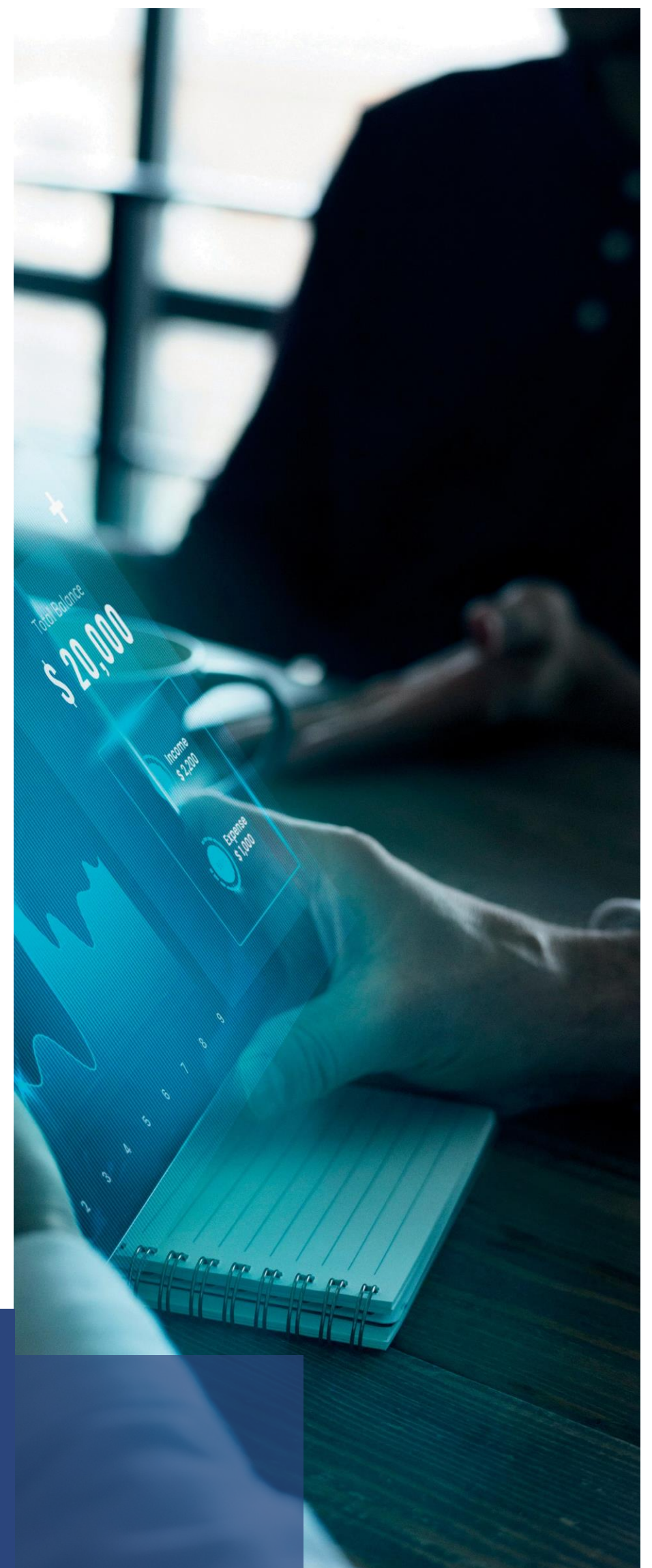
## EDUCATION

Automatic translation software.



## CUSTOMER RELATIONSHIP MANAGEMENT

Customer service chatbots.





---

# OUR DIFFERENT AIS: GENERATIVE ARTIFICIAL INTELLIGENCE (GAI)

Generative AI, also called generative artificial intelligence (GAI), is a fascinating field of AI that focuses on creating new and original content. It mimics the human creative process by using machine learning algorithms to generate images, text, music, code or other forms of content.

Some use cases:



## **ARTISTIC CREATION:**

Generation of original images and works of art, composition of music or poems.



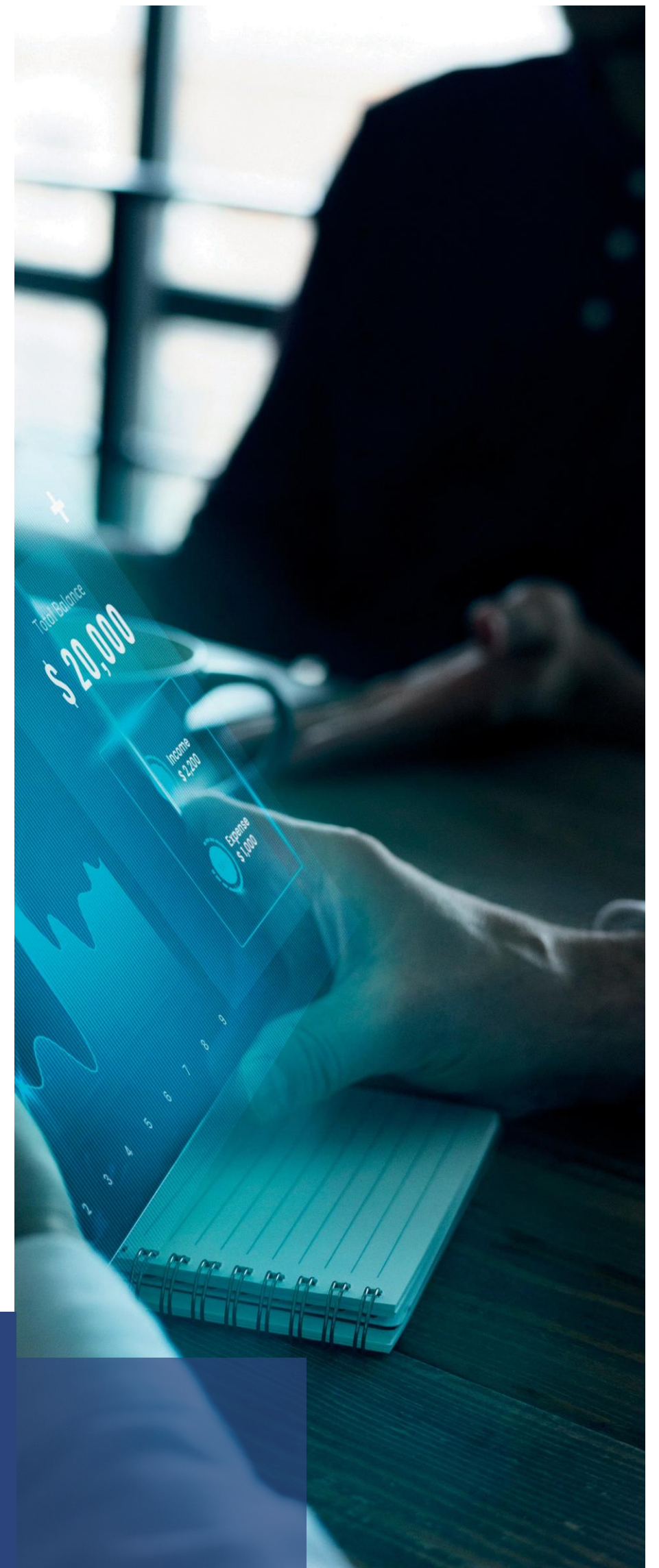
## **DESIGN OF PRODUCTS AND SERVICES: Design**

of new products and services by generating prototypes and innovative ideas..



## **MARKETING AND ADVERTISING:**

Creation of personalized and targeted advertising content, likely to better capture the attention of customers.



---

# OUR DIFFERENT AIS: (MACHINE LEARNING)

Machine Learning is a subfield of AI that allows computers to learn without being explicitly programmed. Machine learning algorithms can learn from data, identify patterns and make predictions. Machine learning is used in a wide range of AI applications, including image recognition, natural language processing and decision-making.

Some use cases:



## HEALTHCARE

Medical diagnosis: Machine learning algorithms can analyze medical images, such as X-rays and MRIs, to identify anomalies and help doctors make diagnose



## TRANSPORTATION

Traffic management: Machine learning can optimize traffic flow, reduce congestion and improve overall transportation efficiency.



## FINANCE

Fraud detection: Machine learning can analyze financial transactions to identify fraudulent activities.



## RETAIL

Product recommendations: Machine learning can analyze customer data to recommend products that may be of interest to them



## MANUFACTURING

Predictive maintenance: Machine learning can predict machine failures, making it possible to plan and avoid them, reducing downtime and maintenance costs.



## AGRICULTURE

Yield prediction: Machine learning can predict crop yields, allowing farmers to better plan their activities.

---

# OUR DIFFERENT AIS: (DEEP LEARNING)

Deep Learning is a type of machine learning that uses artificial neural networks to learn from data. Artificial neural networks are inspired by the human brain and are capable of learning complex patterns from large amounts of data. Deep Learning is used in many cutting-edge AI applications, such as facial recognition, automatic translation and self-driving cars



## COMPUTER VISION AND IMAGE RECOGNITION:

Object detection and image recognition: Identify and locate objects in images and videos, with applications in surveillance, security, medical analysis, autonomous vehicles and much more.



## PREDICTIVE ANALYSIS AND DECISION MAKING:

Demand forecasting: Predict future demand for products or services, allowing companies to optimize their inventories, supply chain and marketing strategies.



## ROBOTICS AND INTELLIGENT CONTROL:

Autonomous robots: Allow robots to navigate complex environments, avoid obstacles and perform tasks autonomously, with applications in search and rescue, delivery and space exploration



**OPTIMIZATION OF YIELDS AND CROP MANAGEMENT:** Yield forecasting: Analyze satellite images, weather data and sensor data to forecast crop yields with greater accuracy. This allows farmers to optimize inputs (fertilizer, water) and make informed decisions about planting and harvesting..



---

# OUR AI PRODUCTS

AI products are software, hardware or services that use AI technology to perform specific tasks. They are available in a wide range of shapes and sizes, and can be used for personal or professional purposes

Some use cas:



## **VIRTUAL ASSISTANTS:**

Our virtual assistant products use AI to understand natural language and respond to user requests..



## **CHATBOTS :**

Our chatbots are computer programs that simulate a conversation with humans. They are used in customer service to answer questions and provide assistance



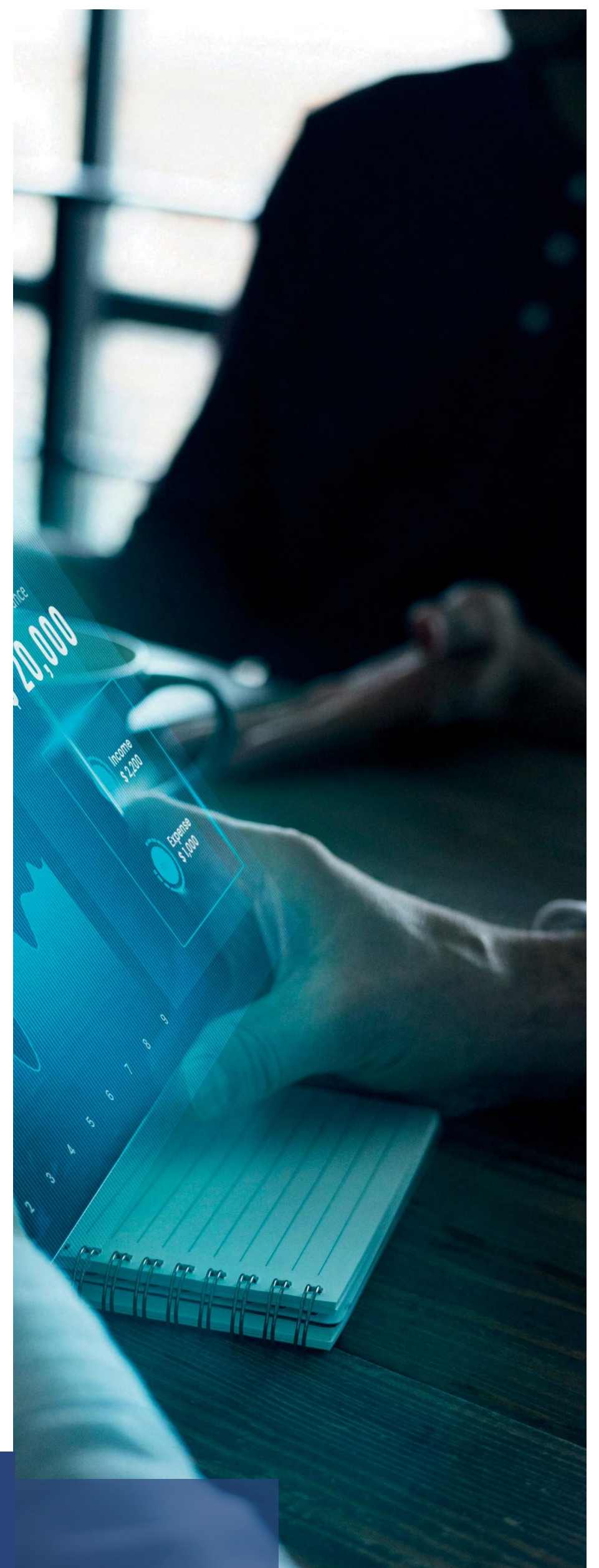
## **FACIAL RECOGNITION SOFTWARE:**

Our facial recognition software uses AI to identify and verify people. They are used in a variety of applications, including security, access control and marketing.



## **AUTOMATIC TRANSLATION SOFTWARE:**

Our automatic translation software uses AI to translate text into different languages





---

# IA SOLUTIONS

Drawing on its established partnerships with the largest technology companies in the market, NGSER supports you in integrating evolving AI solutions to improve the use of your various tools.



**PLANNING OF IMPLEMENTATION**



**DEPLOYMENT OF SOLUTIONS**



**CONFIGURATION OF SOLUTIONS**



**MANAGEMENT OF UPDATES**



**FOLLOW-UP**



**TRAINING AND AWARENESS FOR  
USERS**

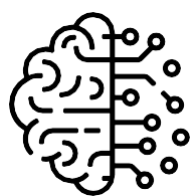


**SUPPORT - LEVELS 2 AND 3**



---

# ABOUT US



## NGSER

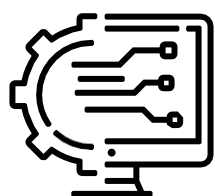
Headquarters: Côte d'Ivoire - Abidjan, Plateau - Avenue  
Lamblin, MATCA Building, 4th Floor,

Team



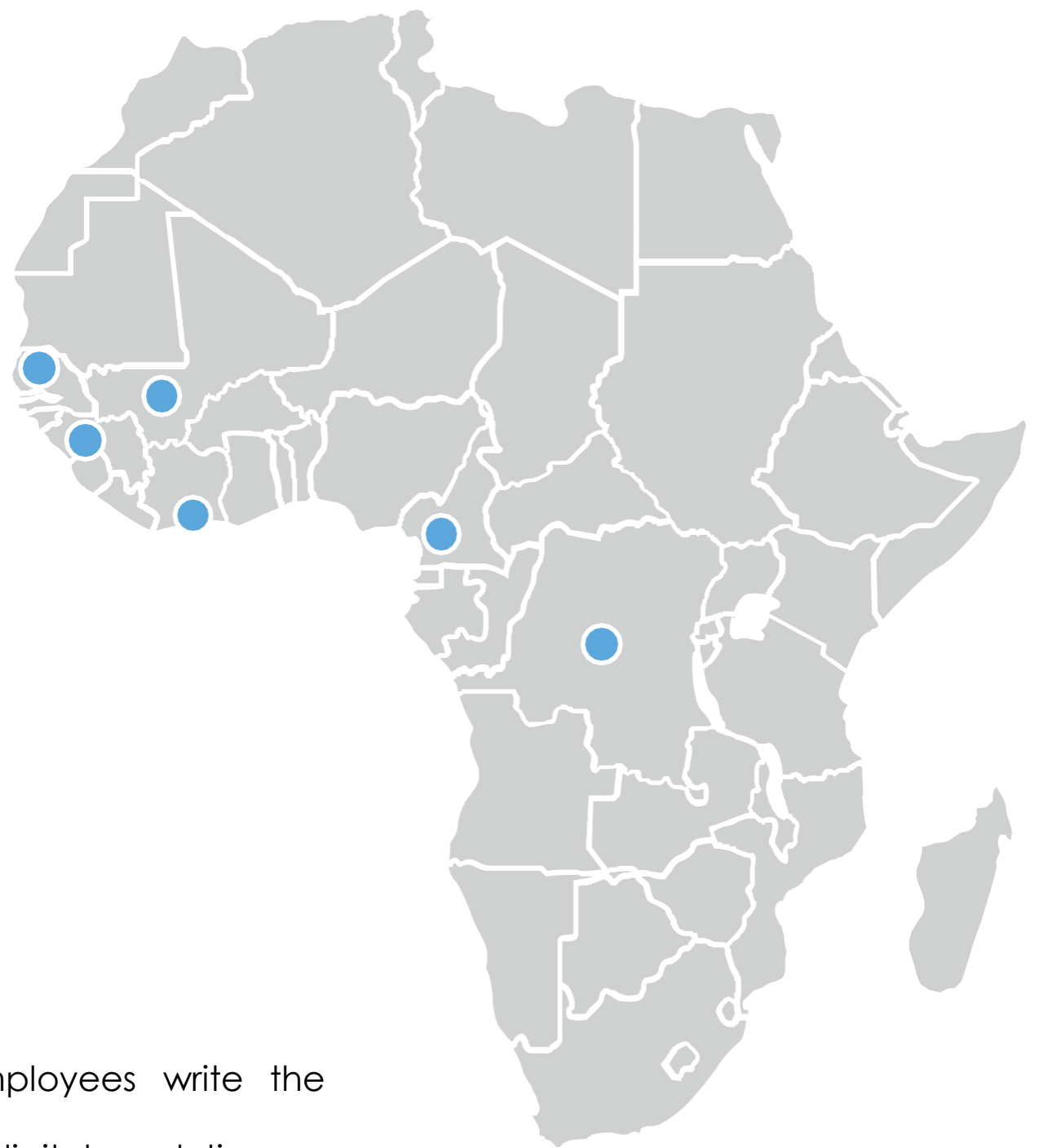
## Team

« Every day, more than 320 inspired and motivated employees write the  
company's history with the great desire to see it succeed in its digital revolution »



## Creation

December 2007, NGSER is created, and its first offices are in the commune of Marcory Zone 4 in Abidjan. 2  
years later, NGSER moves to the business center of Côte d'Ivoire in Abidjan at Plateau. We provide solutions in  
more than 10 countries in West and Central Africa.





---

# OUR AREAS OF EXPERTISE

## Digital Transformation

- Digitalization
- E-Payment
- Cloud computing
- Cybersecurity

## IT & Telecom

- Consulting
- Telecom
- IOT
- Development

## Data Management

- Artificial Intelligence
- Business Intelligence
- Big Data
- Blockchain

## Management Solution

- CRM
- EDM ( Electronic Document Management)
- ERP
- E-Archive

---

Your technology partner

Avenue Lamblin,

4th floor,

MATCA building, Plateau

[www.ngser.com](http://www.ngser.com) - [info@ngser.com](mailto:info@ngser.com)

Tél/Fax : 225 27 20 22 12 53