

SERVICE RADIO



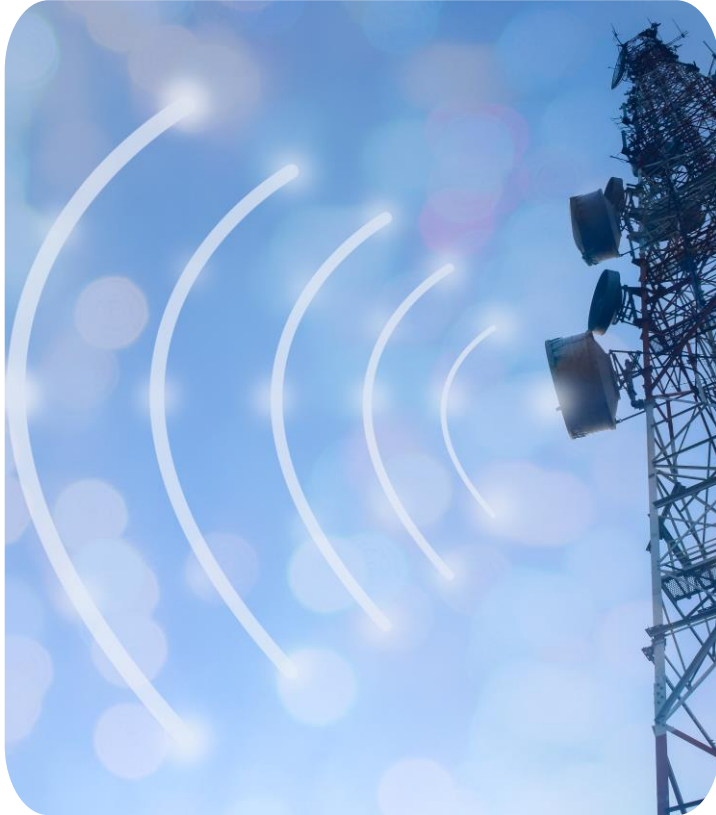
The rapid evolution of wireless technologies (5G, 4G, 3G) demands increasingly high-performing radio engineering to optimize network coverage, capacity, and Quality of Service (QoS). In an environment where telecom operators must meet growing user demands and regulatory constraints, it is essential to rely on advanced expertise to design, optimize, and ensure the reliability of mobile networks.

Our radio engineering service offering is designed to support telecom operators and equipment manufacturers in the deployment and optimization of their networks, ensuring optimal performance and an enhanced user experience.





O u r s e r v i c e s



✓ RNE (Radio Network Engineering - 5G/4G/3G)

Study and design of radio networks to optimize coverage and capacity.

Frequency planning and interference management..

Definition of network dimensioning parameters.

- ✓ RNP (Radio Network Planning – 5G/4G/3G)

Network design and planning based on coverage and traffic needs. Frequency planning and interference management..

Radio performance simulation and modeling.

Propagation study and optimization of site deployment





✓ RNO (Radio Network Optimization - 5G/4G/3G)

Analysis and optimization of radio performance (KPIs, QoS, interference).

Equipment configuration to improve coverage and capacity.

Reduction of dead zones and optimization of user experience

Acceptance Services

By infrastructure

Verification of the conformity of radio infrastructures to technical specifications..

Validation of performance before commissioning.



By site

Inspection and validation of radio performance site by site

Verification of connectivity and signal levels.





✓ SSV (Single Site Verification)

Real-world tests to ensure network performance and stability..

Analysis of KPIs and parameter adjustments.

Quality of Service (QoS) optimization

By site

Detailed analysis of KPIs per site and specific adjustments.
Optimization recommendations based on field measurements..



By Cluster

Overall optimization of radio performance across a set of sites
Improvement of handover management and network fluidity






- ✓ Drive test (5G/4G/3G)

Field measurements to assess coverage and signal quality

Detection of weak areas and proposed corrections



A d d e d v a l u e

Network performance optimization: Improvement of coverage, reduction of interference, and increase in capacity

Data-driven approach: In-depth analyses and strategic recommendations for a more efficient network.

Leading-edge technical expertise : support from engineers specialized in radio engineering.

Compliance and quality guaranteed: rigorous validation of infrastructure and performance to ensure end-user satisfaction



Thanks to our expertise in radio engineering, we help telecom operators maximize the performance of their networks and provide reliable, high-performance connectivity to their users .



- 
- A world map with a grey background and white country borders. Several colored location pins are placed on the map: a red pin in the USA, a blue pin in Rwanda, and a cluster of four pins (green, yellow, orange, and cyan) in West Africa. The text blocks on the left provide details for each of these locations.
-  Avenue Lamblin, 4th floor,
MATCA Building, Plateau
Tel/Fax : (+225) 27 20 22 12 53
 -  4445 Corporation Ln Ste259, Virginia
Beach, VA, 23462 -3671, USA
 -  Kacyiru, Gasabo, Umujyi wa Kigali, RWANDA
 -  Marché Niger, 2nd floor, BABI Bulding,
Almaya Conakry Republic of Guinea
Tel/Fax : (+224) 620 31 41 33
 -  LOME, Qt. TOKOIN DOUMASSESE, Rue: LOTIYE,
08 BP 80842, Tel: 98 28 88 28
 -  DAKAR - SACRE COEUR III PYROTECHNIQUE
2nd FLOOR B2, Lot N° 152 Tel/Fax: (+221) 33 82 50 876