

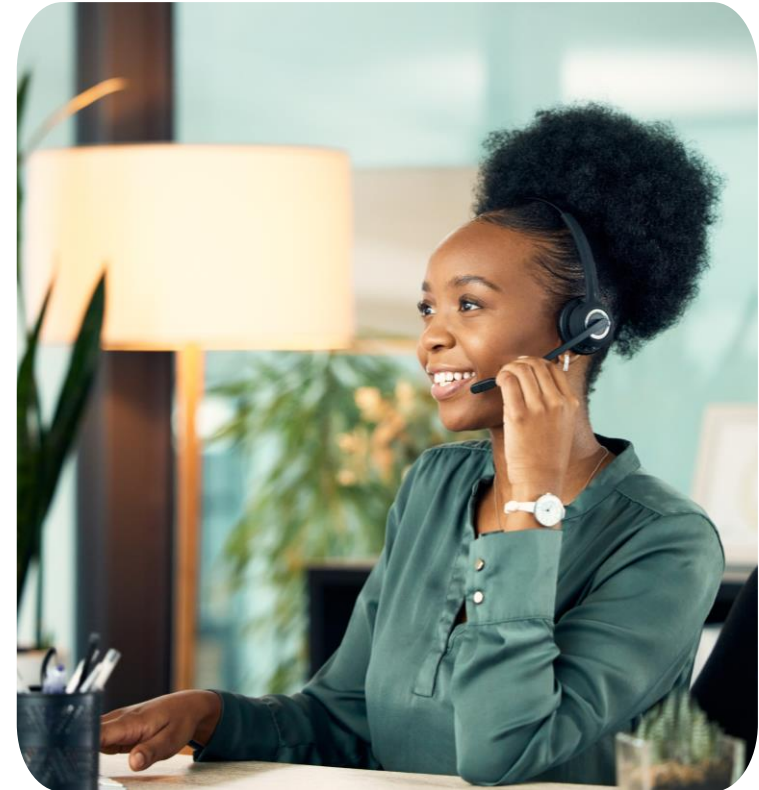
SERVICE INSTALLATION COMMISSIONING



Context

In a world where connectivity is an essential pillar of economic and social development, the installation and commissioning of telecom infrastructures are crucial steps. The deployment of equipment must be carried out with rigor and expertise to ensure optimal service quality and scalability in line with the needs of telecom operators.

Our installation and commissioning service offering covers all the equipment and technologies necessary for the establishment of a reliable and high-performance network, while guaranteeing rapid and efficient integration.





O u r s e r v i c e s

BTS (Base Transceiver Station)

Installation and configuration of base stations.

Tests and validation of connections with the core network



NodeB & eNodeB

Deployment of 3G/4G equipment and optimization of interconnections.

Alignment of parameters for optimal performance.

BSC (Base Station Controller) & RNC (Radio Network Controller)

Integration of site controllers for smooth network management.

Synchronization with the central network elements.



MW (Microwave)

Installation of microwave links to ensure data transmission.

Antenna alignment for stable connectivity.

OF (Optical Fiber)

Deployment of fiber links for high-speed connectivity.

Tests and validation of optical network performance.



HLR/NGHLR, MSC, IN, VAS, Routeurs

Implementation and configuration of core network equipment.

Verification of interconnections with existing systems



Commissioning Offer

- ✓ Configuration and integration of equipment

Configuration of network equipment and validation of interconnections.

Implementation of communication protocols and conformity tests.



Commissioning Offer



✓ Tests and commissioning

Performance verification and settings optimization.

Validation of proper service operation before going live

Commissioning Offer

- ✓ Support and training

Post-deployment technical assistance to ensure effective onboarding.

Training of teams on the operation and maintenance of the installed infrastructures





A d d e d v a l u e

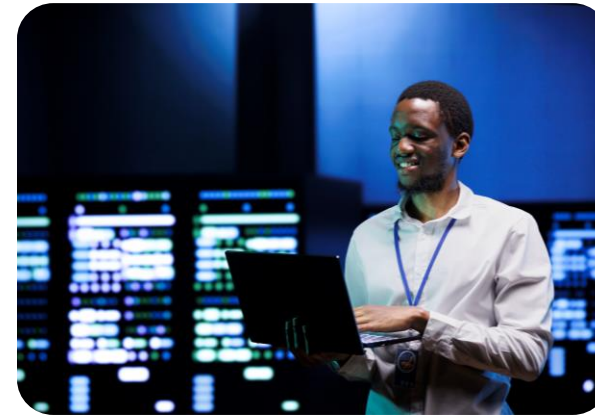
Added value

- ✓ **Rapid and efficient deployment:** optimization of installation and commissioning times.
- ✓ **Multi-technology expertise:** support for all network equipment, from the RAN to the core network.
- ✓ **Quality and compliance guarantee:** adherence to the standards and technical requirements of operators.
- ✓ **Assistance and training:** support for technical teams for smooth and efficient operation



Conclusion

Thanks to our expertise in installation and commissioning, we guarantee telecom operators an efficient and high-performance commissioning of their infrastructures, for optimal and sustainable connectivity.



- 
- A world map with a grey background and white country borders. Several colored location pins are placed on the map: a red pin in the USA, a blue pin in Rwanda, and a cluster of four pins (green, yellow, orange, and cyan) in West Africa. The text blocks on the left provide details for each of these locations.
-  Avenue Lamblin, 4th floor,
MATCA Building, Plateau
Tel/Fax : (+225) 27 20 22 12 53
 -  4445 Corporation Ln Ste259, Virginia
Beach, VA, 23462 -3671, USA
 -  Kacyiru, Gasabo, Umujyi wa Kigali, RWANDA
 -  Marché Niger, 2nd floor, BABI Bulding,
Almaya Conakry Republic of Guinea
Tel/Fax : (+224) 620 31 41 33
 -  LOME, Qt. TOKOIN DOUMASSESE, Rue: LOTIYE,
08 BP 80842, Tel: 98 28 88 28
 -  DAKAR - SACRE COEUR III PYROTECHNIQUE
2nd FLOOR B2, Lot N° 152 Tel/Fax: (+221) 33 82 50 876