

# MAINTENANCE SERVICE



The performance and availability of telecom networks are essential to ensure reliable and continuous connectivity for users.

Faced with technological evolution and the growing demands of operators, the maintenance of telecom infrastructures must be proactive, efficient, and aligned with the best practices of the sector.

Our maintenance service offering guarantees the sustainability of equipment and infrastructures by ensuring continuous monitoring, rapid interventions, and network performance optimization





O u r s e r v i c e s

## Core Service Offering

### CS/CP (Circuit-Switched & Packet-Switched Core)

Monitoring and maintenance of core network infrastructures.

Updating and optimizing equipment performance.



### IN (Intelligent Network)

Supervision and maintenance of intelligent service platforms.

Management of software and hardware evolutions



## Core Service Offering

### VAS (Value-Added Services)

Maintenance of value-added services  
(messaging, multimedia services, etc.).

Monitoring and performance improvement



### Cloud

Management and maintenance of cloud  
infrastructures.

Optimization of resources and data security.

## Core Service Offering

### HLR/MGHLR (Home Location Register / Next Generation HLR)

Monitoring and maintenance of subscriber databases.

Performance optimization and compliance with technological evolutions



### NPRM (Network Performance & Resource Management)

Monitoring of performance indicators and optimization of network resources.

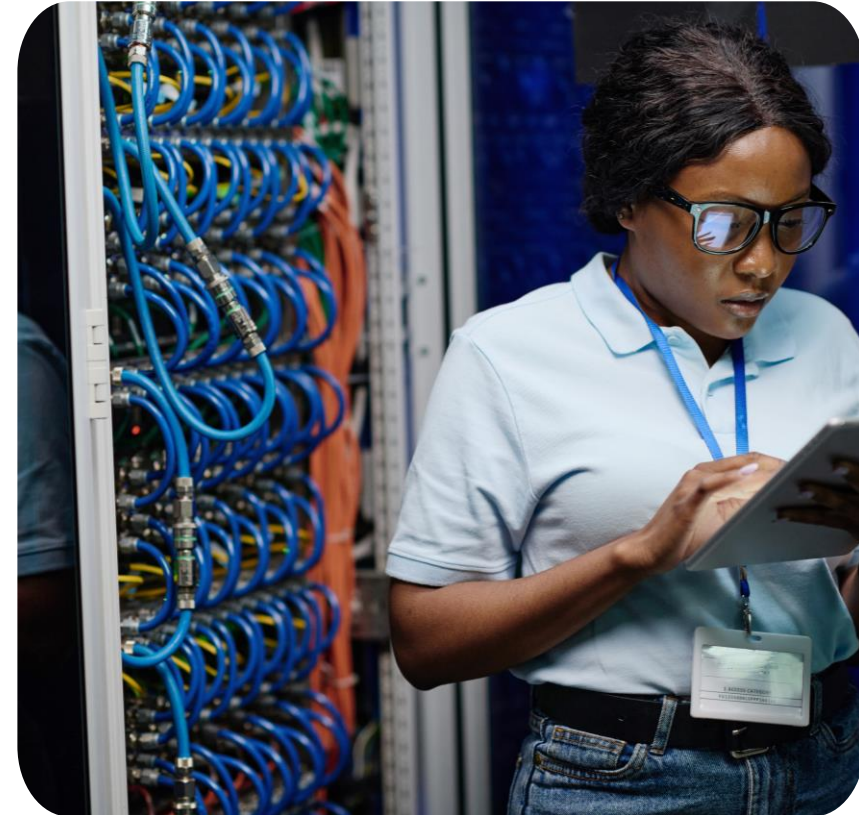
Continuous improvement of user experience

## Core Service Offering

- ✓ Problem Manager

Proactive identification and resolution of network incidents.

Management of continuous improvement processes



## Transmission Service Offering

### FH (MW/SDH) – Microwave and SDH

Maintenance and optimization of wireless transmission links.

Testing and calibration of equipment for optimal connectivity.



### IP & IPBB (FO)

Supervision and maintenance of IP Backbone infrastructures.

Securing connections and preventing failures.



## Transmission Service Offering

### Optical & FTTH (Fiber Optic to the Home)

Preventive and corrective maintenance of optical networks.

Rapid intervention to ensure continuous connectivity.



### NPM (Network Performance Monitoring)

Continuous analysis of transmission network performance.

Detection and resolution of anomalies.

## RAN (Radio Access Network) Service Offering



✓ RNC (Radio Network Controller)

Maintenance of radio network controllers.

Updating and optimization of parameters.

## Core Service Offering

✓ NodeB & eNodeB

Monitoring and maintenance of radio access equipment.

Adjustments to improve service quality



## RAN (Radio Access Network) Service Offering



- ✓ BSC (Base Station Controller) & BTS (Base Transceiver Station)

Maintenance and supervision of mobile access equipment.

Proactive detection and resolution of malfunctions.





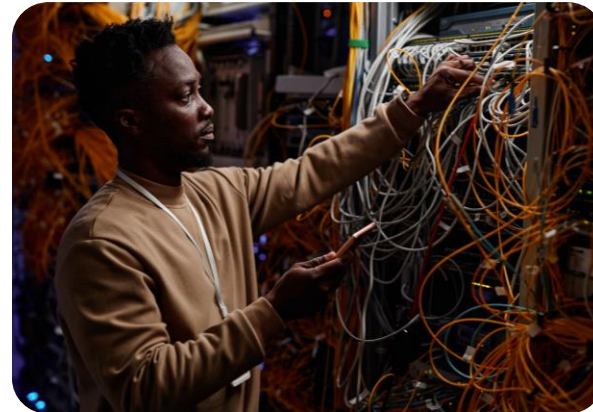
**A d d e d      v a l u e**

- ✓ **Continuous monitoring and responsiveness:** anticipation of incidents and rapid interventions.
- ✓ **Network performance optimization:** improvement of service quality and reduction of interruptions.
- ✓ **Advanced technical expertise:** specialized engineers for proactive infrastructure management.
- ✓ **Sustainability of investments:** regular maintenance to ensure the longevity of equipment.



## Conclusion

Thanks to our expertise in telecom maintenance, we guarantee operators a reliable and high-performing network, capable of meeting users' connectivity requirements.



- 
- A world map with a light gray background and white country borders. Several colored location pins are placed on the map: a red pin in the USA, a blue pin in Rwanda, and a cluster of four pins (green, yellow, orange, and cyan) in West Africa. The text blocks on the left provide details for each of these locations.
-  Avenue Lamblin, 4th floor,  
MATCA Building, Plateau  
Tel/Fax : (+225) 27 20 22 12 53
  -  4445 Corporation Ln Ste259, Virginia  
Beach, VA, 23462 -3671, USA
  -  Kacyiru, Gasabo, Umujyi wa Kigali, RWANDA
  -  Marché Niger, 2nd floor, BABI Bulding,  
Almaya Conakry Republic of Guinea  
Tel/Fax : (+224) 620 31 41 33
  -  LOME, Qt. TOKOIN DOUMASSESE, Rue: LOTIYE,  
08 BP 80842, Tel: 98 28 88 28
  -  DAKAR - SACRE COEUR III PYROTECHNIQUE  
2nd FLOOR B2, Lot N° 152 Tel/Fax: (+221) 33 82 50 876