

# CIVIL SERVICE WORK & ENERGIE



## Context

In the field of telecommunications, infrastructure construction and energy management are critical elements for ensuring the availability and sustainability of networks. The establishment of solid, secure, and energy-consumption-optimized infrastructures is essential to guarantee the quality and continuity of telecom services.

Our **Civil Work & Energy service** offering covers all the work necessary for the deployment of telecom infrastructures, from engineering to quality control, including construction and energy optimization.

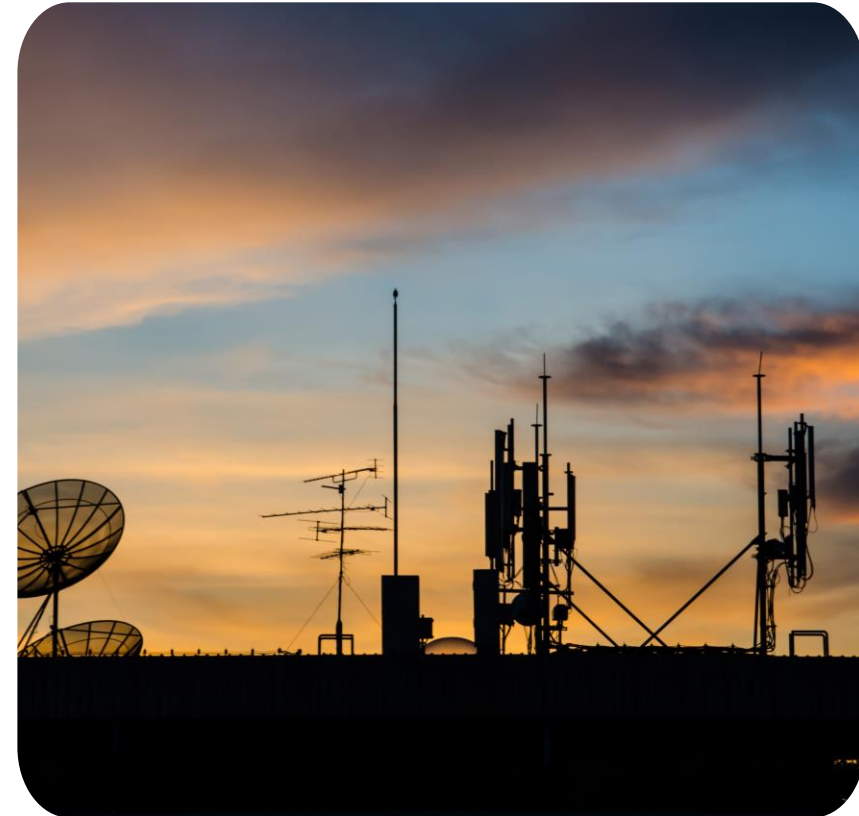




O u r s e r v i c e s

### Studies and Design of Infrastructures

- ✓ Feasibility studies and dimensioning of telecom infrastructures.
- ✓ Design of sites in compliance with technical and environmental standards.
- ✓ Optimization of site locations to maximize coverage and network resilience







### Planning and Project Management

- ✓ Coordination of deployment phases to ensure deadlines are met.
- ✓ Supervision of teams and management of logistical constraints.
- ✓ Budget monitoring and resource management.

### Installation and Development of Telecom Sites

- ✓ Civil engineering work for the installation of towers, masts, and shelters.
- ✓ Construction and reinforcement of infrastructures for better resistance to environmental conditions.
- ✓ Implementation of security and equipment protection systems.





### Deployment and Installation of Electrical Equipment

- ✓ Installation of electrical cabinets and power distribution devices.
- ✓ Integration of cooling and air conditioning systems for telecom sites.
- ✓ Energy optimization to reduce consumption and operating costs.

### Inspection and Conformity Tests

- ✓ Verification of installations according to telecom standards and safety regulations.
- ✓ Validation of infrastructure performance and necessary adjustments.
- ✓ Regular audits to ensure the reliability and durability of equipment







### Energy Management and Sustainable Solutions

- ✓ Implementation of hybrid energy solutions (solar, batteries, smart generators).
- ✓ Monitoring and maintenance of equipment to ensure a stable power supply.
- ✓ Optimization of energy consumption and reduction of the carbon footprint.



**v a l e u r   a j o u t é e**

- ✓ **Robust and sustainable telecom infrastructures:** solutions adapted to the most demanding environments.
- ✓ **Expertise in energy management:** advanced technologies for optimized consumption.
- ✓ **Respect for deadlines and standards:** a rigorous process guaranteeing quality and compliance.
- ✓ **Sustainable and economical solutions:** integration of renewable energies to reduce operating costs.



## Conclusion

Thanks to our expertise in **Civil Work & Energy**, we enable telecom operators to benefit from reliable, scalable, and eco-responsible infrastructures, thus ensuring a high-performance and sustainable network.





- 
- A world map with a grey background and white country borders. Several colored location pins are placed on the map: a red pin in the USA, a blue pin in Rwanda, and a cluster of four pins (green, yellow, orange, and cyan) in West Africa. The text blocks on the left provide details for each of these locations.
-  Avenue Lamblin, 4th floor,  
MATCA Building, Plateau  
Tel/Fax : (+225) 27 20 22 12 53
  -  4445 Corporation Ln Ste259, Virginia  
Beach, VA, 23462 -3671, USA
  -  Kacyiru, Gasabo, Umujyi wa Kigali, RWANDA
  -  Marché Niger, 2nd floor, BABI Bulding,  
Almaya Conakry Republic of Guinea  
Tel/Fax : (+224) 620 31 41 33
  -  LOME, Qt. TOKOIN DOUMASSESE, Rue: LOTIYE,  
08 BP 80842, Tel: 98 28 88 28
  -  DAKAR - SACRE COEUR III PYROTECHNIQUE  
2nd FLOOR B2, Lot N° 152 Tel/Fax: (+221) 33 82 50 876